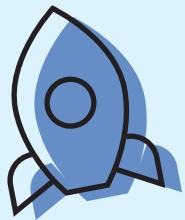


OUR PLEDGE

Wiltshire Council Families and Children's Services



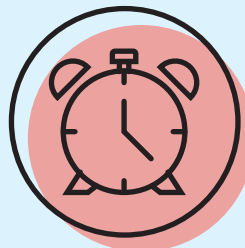
We are approachable



We ask questions



We listen to each other



We give time



We are honest



We celebrate and share success



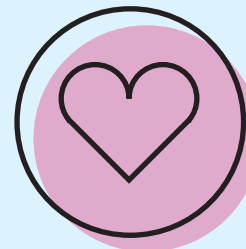
We have positivity



We share information and responsibility



We give feedback



We celebrate differences



We have clear expectations

We are here to work with you and your family, to keep you safe and together, with the right support in place at the right time.

We will be working with you to develop these values. If at any point we feel these values fall short, we all promise to talk about it.

